



# INSTALLATION GUIDE

## KLÉCO WALLS

Version : 14-05-2024

Creating a privacy wall requires careful attention to detail, planning, and understanding of materials and installation processes. Here's a step-by-step guide to help you get started. This guide is particularly suited for walls made of alternative materials such as PVC boards or 100% recycled plastic boards. The installation process is slightly different from wood, but you could also use the system for wood cladding.

### 1. Planification et Conception

- Determine the location: Choose where you want your privacy wall to be located. Consider orientation relative to the sun, prevailing winds, and sightlines you wish to block.
- Check local regulations and building codes: Before starting, check local building codes and zoning regulations. Some areas require permits for building walls or fences of certain heights. Additionally, this guide is intended as an illustration of advice and does not replace professional advice. The consumer assumes all risks or consequences associated with the construction and use of this product.
- Choose the material: Recycled plastic, PVC, or wood. Recycled plastic is the most durable and maintenance-free product in the long term. PVC is chosen for its wood grain finish and lightweight properties. Wood offers a different look but will require maintenance over time.

### 2. Materials and Tools

- Posts, channels (2 vertical and 2 horizontal), and cladding boards
  - IMPORTANT: The Double Wall horizontal trim is for the Bottom of the Wall (for black only)
- Square bit #10 and extension
- 2 Steel Drill Bits: 1/4" and 1/8"
- Bubble level and tape measure
- Saw (circular)
- Drill
- Cord or chalk line for aligning posts.
- Each wall section includes: 2 brackets, 4 painted finishing screws, and 20 #10 screws to attach the moldings.

### 3. Installation

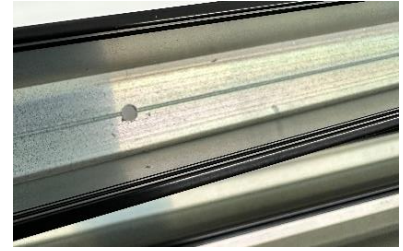
#### Step 1: Mark the Ground or Location.

- For a **fence on the ground**, use stakes and a rope to mark where the wall will be built. Ensure the line is straight and leveled.
- For installation on a patio surface, make sure you have enough material for your anchors and ensure compliance with your patio product's standards for anchoring posts in it. For example, on a 100% plastic patio surface from Dekavie, you must pre-drill holes for posts 1/4" larger than the size of the anchors. Then anchor the attachments directly into the wooden joists.
- Follow the post installation method you desire. Kléco offers a range of aluminum post options to suit different methods (96" post without a base, 73", 48", and 36" posts with a base).
- The maximum distance between posts is 6' for tongue-and-groove PVC or recycled plastic walls and a maximum of 4' for louvered walls.
- Ensure posts are straight and leveled.

#### Step 2: Fix Vertical Channels

- Depending on the desired height, cut the vertical moldings. For a 6' wall, the provided vertical moldings are already of adequate dimensions, i.e., 67".
- Use the bottom horizontal cross member (double bottom molding) to help align your vertical moldings. Measure and cut the bottom channel to fit between the posts. Then use 2x4 scraps and shims to help position the horizontal channel at the desired height and a level to ensure the wall will be straight.

- Then mark the location of your vertical molding where it will be butted into the bottom horizontal molding.
- Using a metal drill bit (1/8"), pre-drill the center of the bottom of the vertical moldings in 5 distinct places, spaced evenly along the length. Start from the top of the molding (1.5" from the top) and leave a space of 6" at the bottom. The holes are for screws that will attach the vertical moldings to the posts.
- Using a level and tape measure, attach the vertical moldings to the posts using #10 screws, aligning them with the previously made marks.



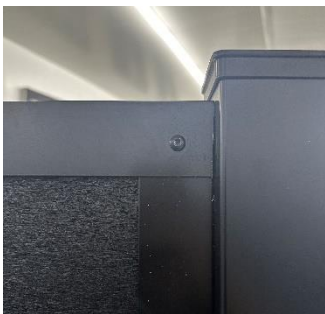
### Step 3: Fix Bottom Channel



- Drill a 3/8" hole through each end of the bottom molding to allow water drainage. Make sure not to line up with the bracket screw.
- Attach the channel to the posts starting from the bottom (double bottom molding) using #10 screws and the 2 brackets. Ensure that your bottom cross member is level and firmly pressed against the vertical molding.
- You may need the bit extension to facilitate your work. You can also make installation easier by pre-drilling holes smaller than the screw threads in the vertical and bottom moldings

### Step 4: Install Cladding Boards

- Cladding boards are simply slid into the vertical moldings. Measure the distance between the posts. Ensure your board always has a 1/2" clearance on each side once slid into the vertical moldings. This allows for product expansion.
- Boards should never be exposed to direct sunlight before cutting. It's best to keep them in the shade, and the installation temperature should be between 10 and 20 degrees Celsius.
- Boards should not be screwed but left floating.
- For a 6' wall, you will need 11 tongue-and-groove boards.



### Step 5: Fix the Top Channel

- Measure and cut the top channel to fit between the posts.
- Then use the screws with painted heads to attach it at the top of the wall.
- Pre-drill and then screw into the corners so that the screw attaches the vertical and horizontal molding together. You can repeat this step at the 4 corners of the wall.
- Take precautions not to insert the screw into the cladding boards.

## **4. Maintenance**

- Periodically check the wall for any signs of damage and make necessary repairs.
- One of the advantages of recycled plastic is its durability and resistance to the elements. However, it's always good to periodically clean the wall with soapy water to remove accumulated dirt or dust.

**This guide provides a basic overview for installing a privacy wall. Remember to customize your project to meet your specific needs and consider the local climate when choosing materials and designing your wall.**

**For any questions or concerns, contact us at [ventes@avenord.com](mailto:ventes@avenord.com) or 888-994-3130**